

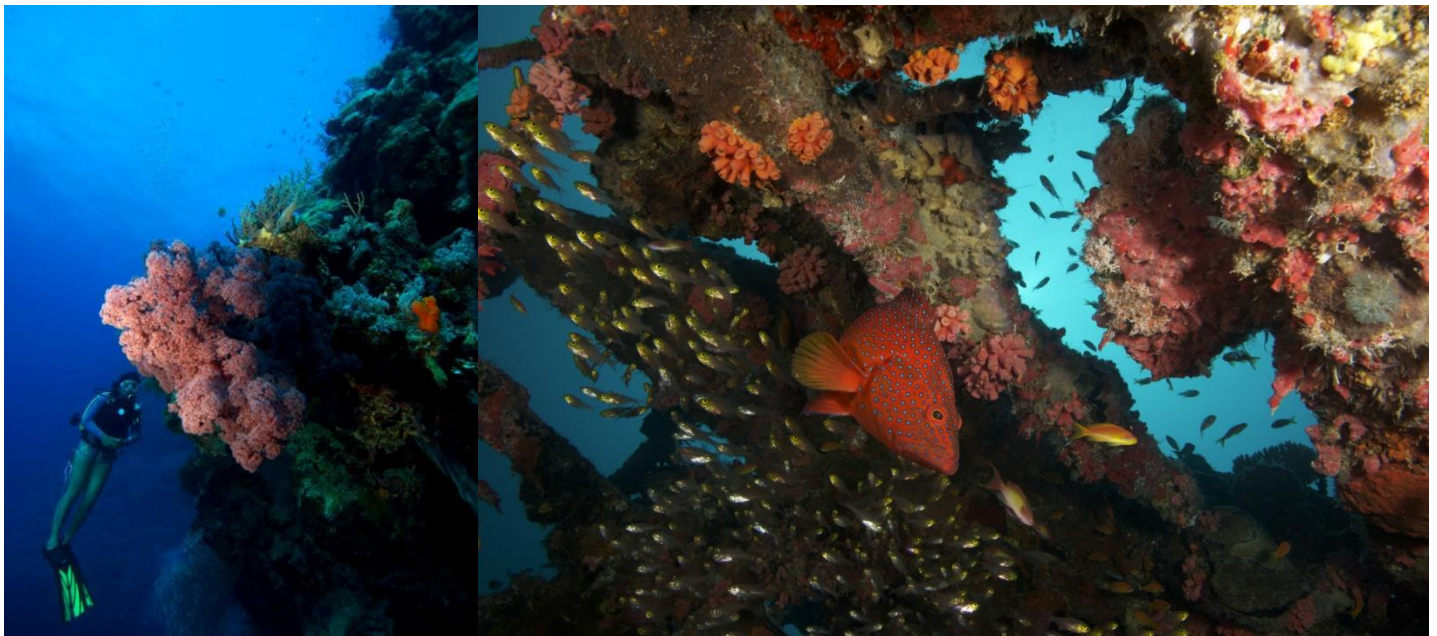


FUSHIFARU MALDIVES - LIFE ABOVE AND BELOW THE WATERLINE

From must-do dive sites to local island adventures

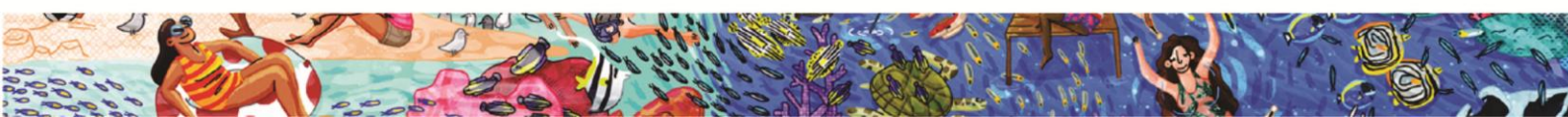
February, 2018 - Located on the far North East border of Faadhippolhu Atoll, more popularly known as Lhaviyani Atoll, Fushifaru Maldives hosts one of the Maldives' greatest gems - *Fushifaru Kan'du* - a national Marine Protected Area five minutes from the island, and many other adventures above and below the waterline.

In an atoll known for its unparalleled diving experience, Fushifaru Maldives sits between two channels that connect Lhaviyani's inner lagoon to the vast Indian Ocean. The larger of the two channels forming the atoll is *Fushifaru Kan'du*, which has earned its reputation as an extraordinary underwater world thanks to its three iconic dive sites, Fushifaru Corner, Fushifaru Giri and most famously, Fushifaru Thila.



Below the Waterline

Only minutes away from these natural wonders, staying at Fushifaru Maldives is the perfect getaway for divers and avid adventure seekers. Fully equipped with the latest in dive technology and expertise, Best Dives Maldives at Fushifaru can cater to every diver's desire.



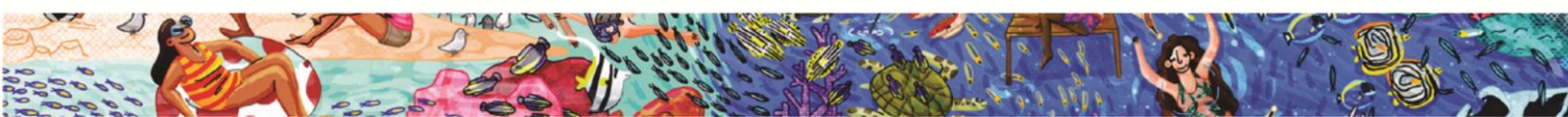


Fushifaru Corner is the ultimate exhilarating experience and the area's best kept secret. With a beautiful shallow reef dropping to a depth of 30 metres, divers can make an exciting drop into the blue to watch, as huge schools of fish hang in the currents on top of the reef, spot numerous sharks circling above and a variety of mega fauna passing by on their journey to the open ocean. If one wishes to cross the broad, deep channel, its sandy bottom can present a whole host of surprises and a challenging drift dive.

Teeming with marine life and often treating divers to visibility of up to 30 metres, a truly magical underwater world awaits anyone diving or even snorkelling below the gentle lapping waves at Fushifaru Thila. During the southwest monsoon however, Fushifaru Thila hosts its greatest treasure: a manta ray feeding station frequented by these ocean giants. With wingspans of up to 7 metres, they are a truly magical sight to behold. This spot, right at Fushifaru's doorstep, provides the perfect chance for opportune snorkelling and diving experiences, even when the manta rays pay the area a visit during low-season plankton blooms. Guests are reminded to never forget their camera as our guides will assist to capture that perfect branchial shot in order to identify and possibly even name your manta ray upon return!

For guests looking to experience their first dive, Best Dives Maldives at Fushifaru offers dive courses with certified PADI instructors and the opportunity to create a lifetime of memories. In just a matter of hours, guests can have their first taste of the underwater world from the comfort of the resort's infinity pool and sheltered house reef just a stone's throw from its white sandy shore. Fushifaru Giri is suitable for all levels of divers, its coral encrusted overhangs and vibrant reef gently sloping to a depth of up to 25 metres.

Lhaviyani's currents are another experience worth travelling for, especially since each location is a short speedboat ride away. In the northern part of the Atoll, Fushifaru Maldives

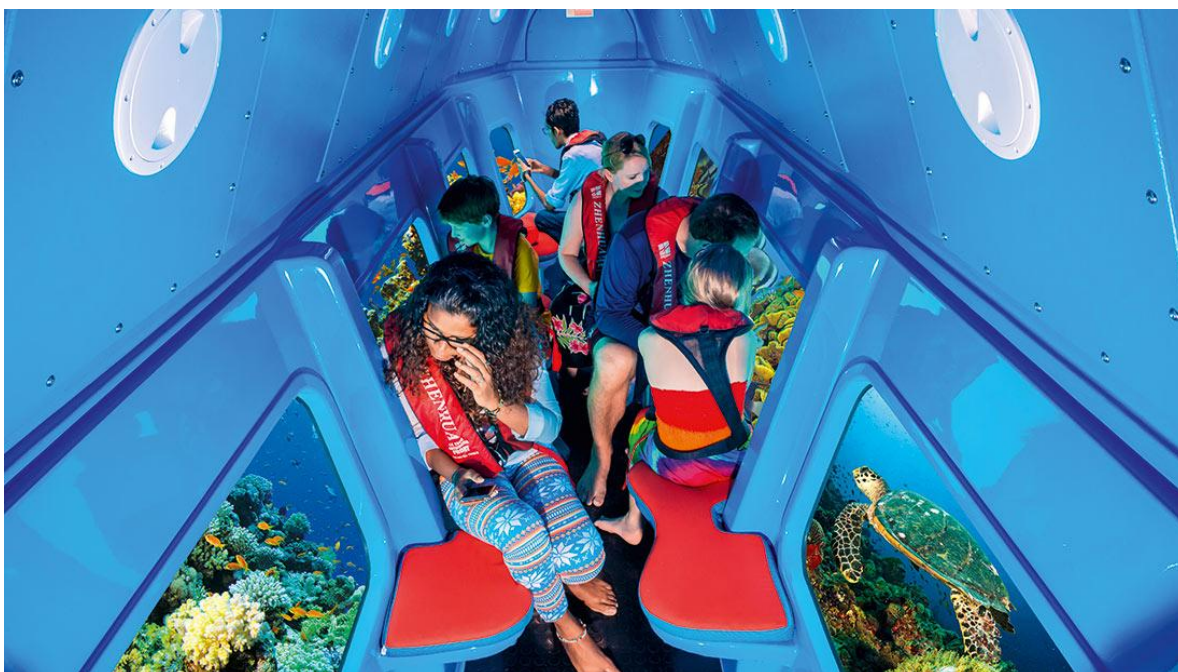




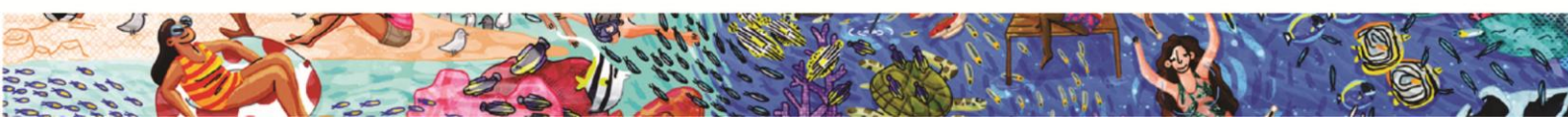
is surrounded by opportunities for thrilling drift dives. Turtles and lobsters shelter beneath cathedral-like overhangs, where the steep coral reefs plunge to sandy bottoms inhabited by giant sting rays and circling grey reef sharks. But the highlight of these dives are the secrets of the blue where almost anything can glide by... keep an eye out for barracuda, eagle rays, schooling snappers, an abundance of tuna and even silver tip sharks.

For those intrigued by mystery and the unknown, just a 15 minute speedboat ride from the island sits the *Shipyard*, a dive site renowned for its two wrecks. The well-intact vessels and their growing coral cover are a sight to behold upon first glance and even more intriguing as one begins to explore... nurse sharks can be found snoozing beneath the hulls and mysterious openings offer a glimpse of the wrecks' interiors, where creatures shelter from the exhilarating currents produced by the vessels' interruption of the channel's flow. .

For those who prefer to stay dry underwater, Best Dives Maldives' signature yellow semi-submarine is perfect for gliding over Fushifaru's reefs to admire all the wonders of the ocean, or even keep a lookout for pods of dolphins as they swim by the island.



Fushifaru Maldives, Lhaviyani Atoll, Republic of Maldives. T +960 6620202 F +960 6620303
fushifaru.com

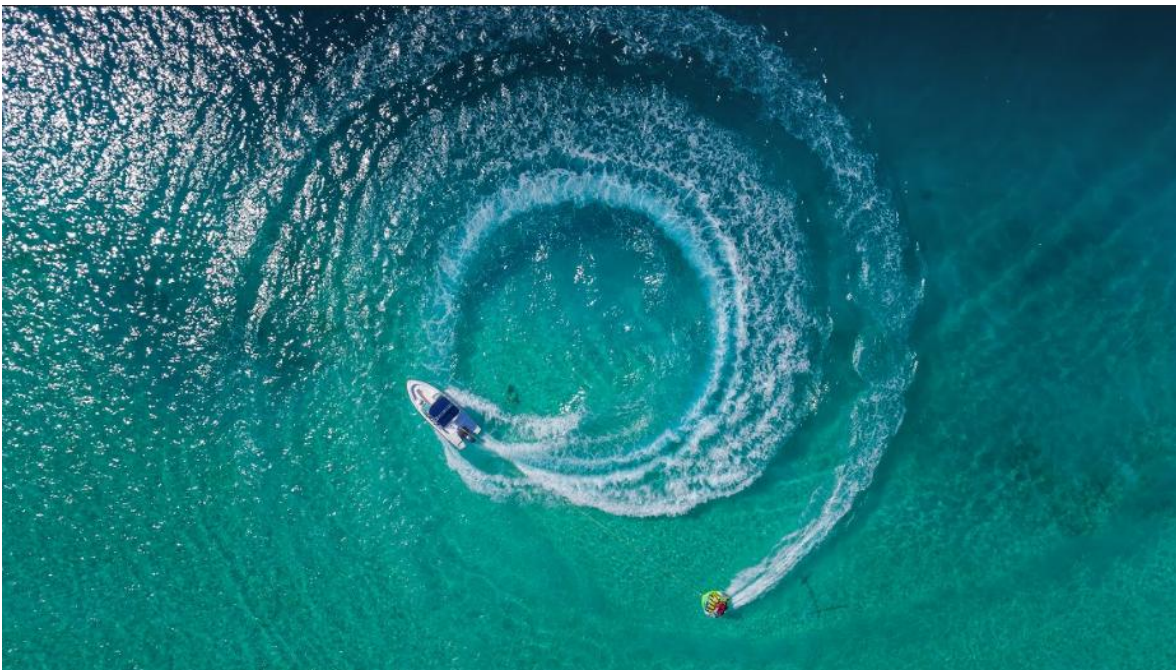




FUSHIFARU
maldives

Above the Waterline

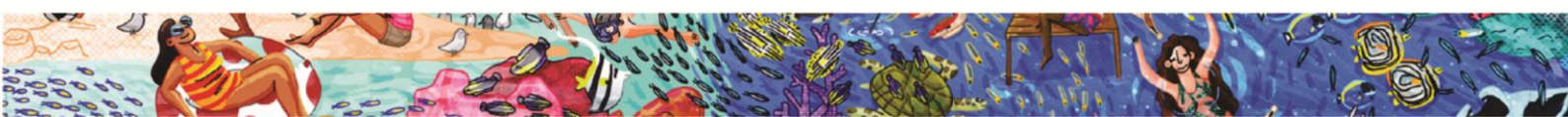
For thrill seekers and adrenaline junkies, take a spin on a jet ski: race around the lagoon or explore the secrets of the atoll's deserted islands. Alternatively choose to glide through the waters on a catamaran, kayak or paddle boat, or take up windsurfing, kite surfing, parasailing, waterskiing, mono-skiing or wakeboarding with our experienced instructors.



Dolphin cruises, sunset cruises, fishing excursions, a private dinner on one of our luxury yachts and big game fishing are all available upon request.

Custodians of Conservation

After a day in the ocean, join us in the evening for one of our weekly marine talks where our Resident Marine Biologist shares an insight into Fushifaru's underwater inhabitants and our latest conservation efforts. Learn more about the resort's recently laid turtle nests as we monitor them for hatchlings and guests' involvement in our partnership with the Olive Ridley Foundation and the Manta Trust ID programs. For regular updates on 'Wendy', our recent





Olive Ridley rescue turtle and to learn more about our trained Eco Divers' re-launch of Lhaviyani's Reef Check monitoring program, follow us on [Facebook](#) [Instagram](#) and [Twitter](#).

Local Island Adventures

For a taste of island living and local culture, Fushifaru is only a 20-minute speedboat ride away from the atoll's capital island, Naifaru. For the last five years, Naifaru has been home to the atoll's turtle rehabilitation centre, championing numerous social and sustainability volunteer activities. An 18-minute speedboat ride will take you to Felivaru where one of the Maldives' largest fish canning factories is located. The island of Hinnavaru is also just a 15-minute speedboat ride away, offering an immersive experience of local island life.

For reservations and enquiries, kindly email fushifaru@bestdivesmaldives.com or reservations@fushifaru.com or log on to www.fushifaru.com. Alternatively, follow us on [Facebook](#) [Instagram](#) and [Twitter](#) for daily updates.

END

Note to Editors:

Fushifaru Investments Pvt Ltd was incorporated to develop, operate and manage Fushifaru Island in Lhaviyani Atoll as a tourist resort. Fushifaru Investment is a part of Muni Enterprises. With an established track record of over 35 years, this is Muni Enterprises' first venture into resort management, diversifying their already existing portfolio of luxury safari boats, luxury residences and a travel agency.

For more information, please contact:

Angeline Leo

pr@fushifaru.com

or

Anusha Zubair

smm@fushifaru.com

www.fushifaru.com

For access to high resolution images, please click [here](#).

