



VILLA **NORMA**
BREATHTAKING 360° VIEW
BASEMENT FLOOR

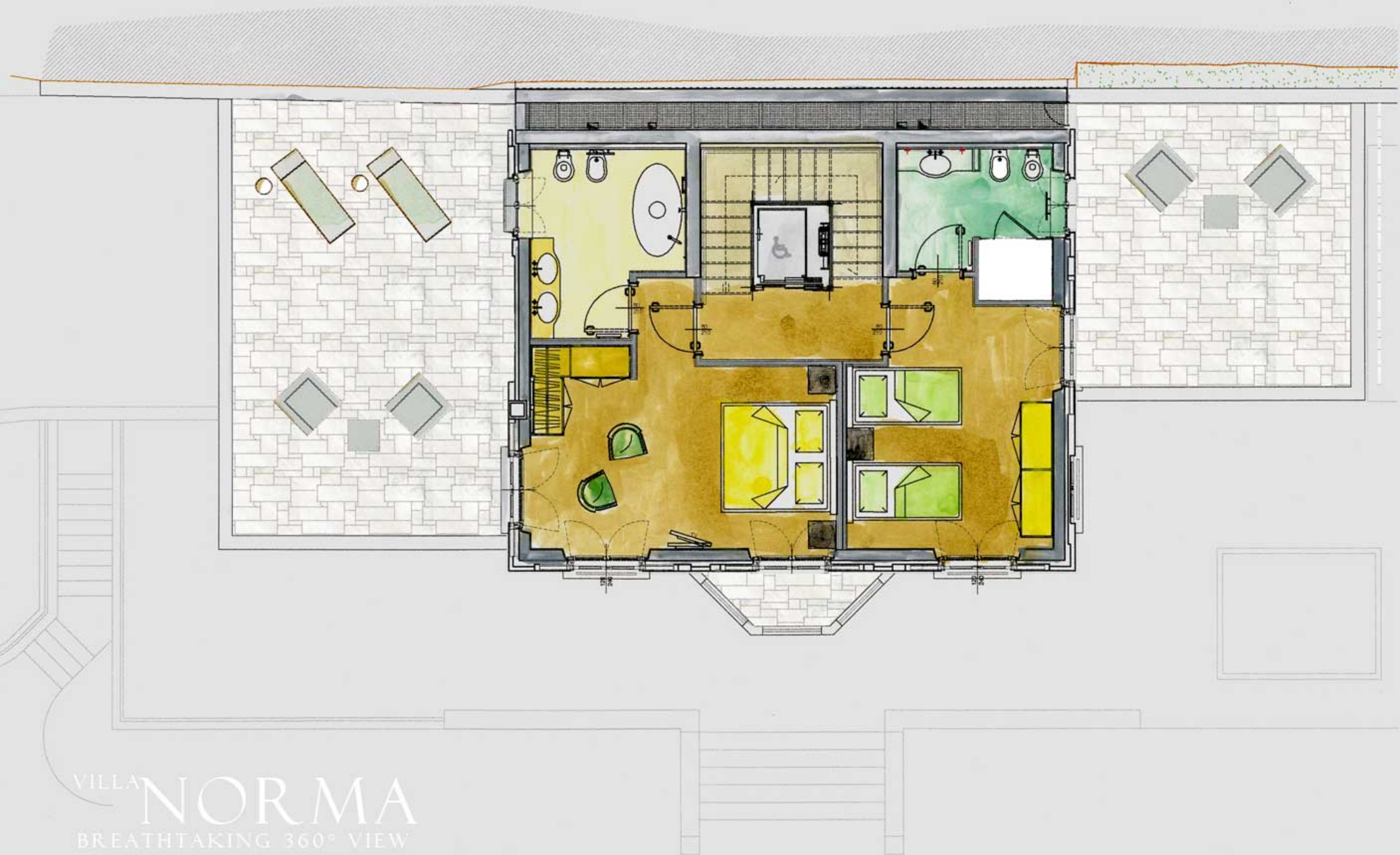
LAKE



VILLA **NORMA**
BREATHTAKING 360° VIEW
GROUND FLOOR

LAKE

VILLA NORMA
GROUND FLOOR



VILLA **NORMA**
BREATHTAKING 360° VIEW
FIRST FLOOR



LAKE FRONT

VILLA **NORMA**
BREATHTAKING 360° VIEW
SECOND FLOOR



Villa Norma

Technical information

Total 798,00 mq./8.590,00 sq.ft.

337,00 mq./3.627,00 sq.ft. Villa + 280,00 mq./3.015,00 sq.ft. garden + 181,00 mq./1.948,00 sq.ft. lake terraces.

4 floors with elevator.

Terrace with outdoor Jacuzzi and private garden with direct view on the Lake.

“Lake” floor:

game room with pool table, play corner and wet bar, office area, private dock with pier;

ground floor:

large windows overlooking the Lake;

full kitchen with fridge, dishwasher, icemaker, wine cellar, multi-function oven and induction cooktop (AEG Electrolux);

dining room, living room with fireplace and library, one bathroom;

first floor:

2 bedrooms each of them with private bathroom and terrace;

second floor:

master bedroom, private bathroom with bath tub and stall shower, walking closet.

Villeroy & Boch sanitary fittings.

Installations: independent, sprinkler, smoke detector.

Clean energy and full independence are two main pillars of CastaDiva Resort, that make the resort even more unique.

Environmentally-friendly resort, no methane generated energy (only electrical installations).

Independent emergency water supply.

Independent emergency power supply (generator).

Production of clean energy by drawing water from the lake for the heat exchanger.

Audiovisual equipment.

Internet wi-fi and high speed cable connections.

Sound transmission.

42” and 32” TVs.

Materials: Oak panels, Palladian flooring, Italian marble, Teak Bourma, wooden beams, external class A door windows, slate roof.

Air conditioning Independently adjustable air conditioning system in all rooms.

